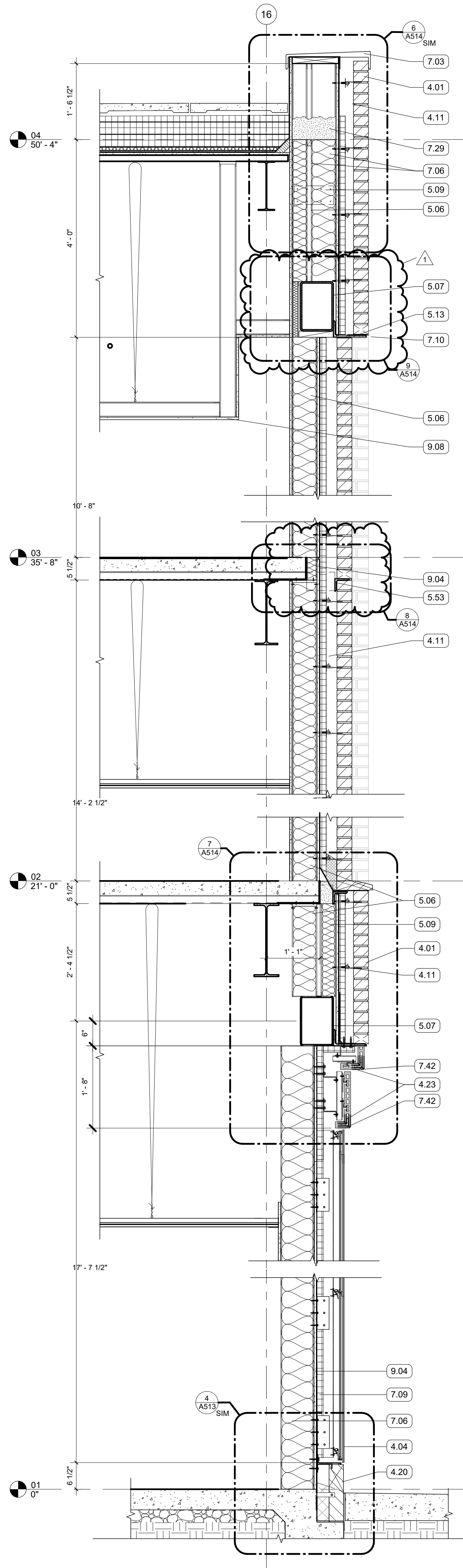
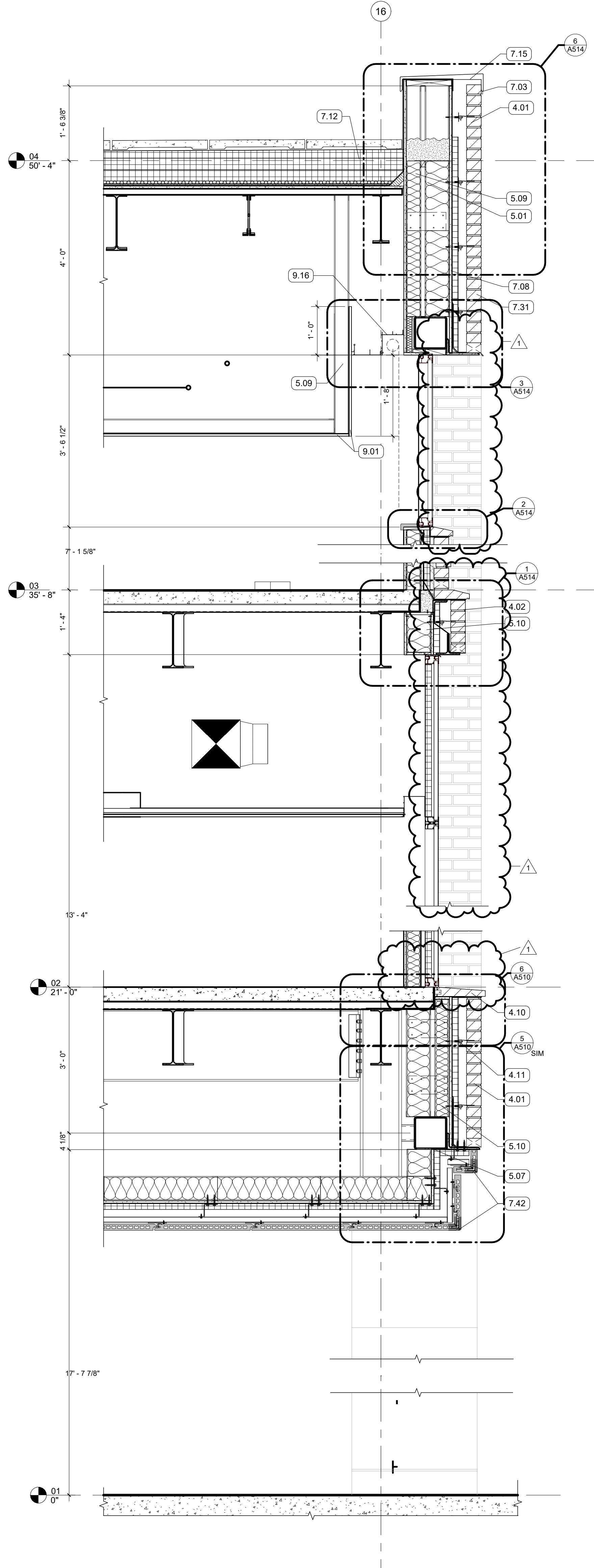


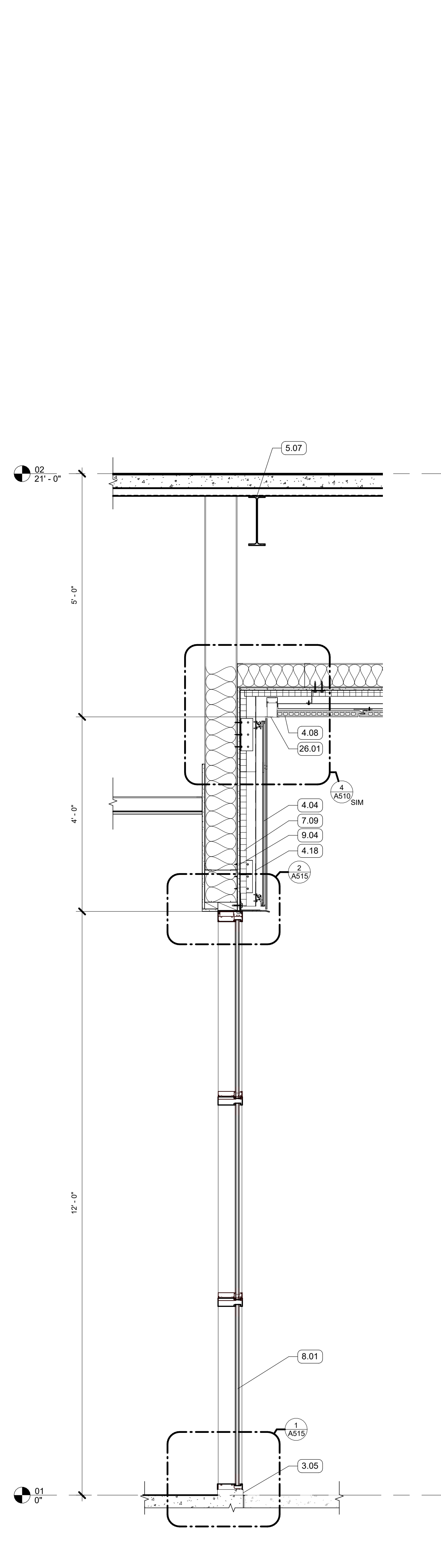
1 WALL SECTION
3/4" = 1'-0" | RE:1/A101



2 WALL SECTION
3/4" = 1'-0" | RE:4/A200



3 WALL SECTION
3/4" = 1'-0" | RE:1/A101



4 WALL SECTION
3/4" = 1'-0" | RE:1/A101

GENERAL NOTES

KEYNOTES

- 3.05 CEMENT PARGE COAT ON EXPOSED SLAB EDGE
- 4.01 FACE BRICK VENEER, RUNNING BOND
- 4.02 4" RECESSED BRICK COURSE, RUNNING BOND, RECESS HORIZONTAL BANDS AN ADDITIONAL 1/2"
- 4.03 8" RECESSED BRICK COURSE, STACK BOND, PROJECT EVERY 3RD COURSE 1/2"
- 4.04 TERRA COTTA RAINSCREEN - STACK BOND, UNIT SIZE #1
- 4.08 PLASTER SOFFIT SYSTEM ON MTL. FRAMING - ALTERNATE NO. 2 REPLACES PLASTER SYSTEM WITH TERRA COTTA LARGE FORMAT SOFFIT PANELS
- 4.10 FACE BRICK, SPECIAL SHAPE SILL
- 4.11 MASONRY ANCHORS
- 4.12 WEEP VENTS AT 24" O.C. MIN
- 4.18 CONTINUOUS ALUMINUM SUBSTRUCTURE
- 4.20 CAST STONE PANEL
- 4.23 BONDED CORNER
- 5.01 8" METAL STUD FRAMING
- 5.06 6" METAL STUD FRAMING
- 5.07 STRUCTURAL STEEL FRAMING
- 5.09 3 5/8" METAL STUD FRAMING
- 5.10 3 5/8" METAL TRACK
- 5.13 EDGE ANGLE
- 5.52 GALVANIZED LOOSE LITEL - PAINT TO MATCH BRICK WHERE EXPOSED
- 5.53 SHELF ANGLE - RE: STRUCTURAL
- 7.03 PREFINISHED CORING FLASHING
- 7.06 BATT INSULATION, SIZED TO MATCH STUD DEPTH
- 7.08 PROTECTION COURSE
- 7.09 MINERAL FIBER BOARD INSULATION
- 7.10 THRU-WALL FLASHING, SLOPED TO DRAIN
- 7.12 2 1/2" POLYISO INSULATION
- 7.15 CLEAT, CONT
- 7.29 SPRAYED FOAM INSULATION
- 7.31 ST STL SCUPPER
- 7.42 DRIP EDGE
- 8.01 ALUM STOREFRONT, CURTAINWALL OR WINDOW SYSTEM, SEE OPENING SCHEDULE
- 9.01 5/8" GYPSUM BOARD, SEE FINISH PLAN FOR FINISH MATERIAL
- 9.04 5/8" EXTERIOR SHEATHING
- 9.08 GYP BD CEILING ON METAL FRAMING
- 9.16 2-SIDED PERIMETER POCKET
- 26.01 RECESSED LED FIXTURE